

## GV 2 - Valve Manifold

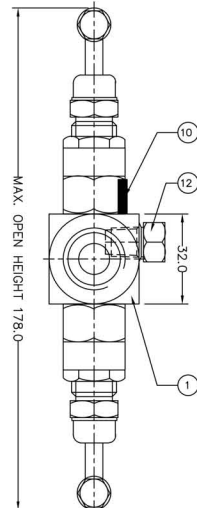
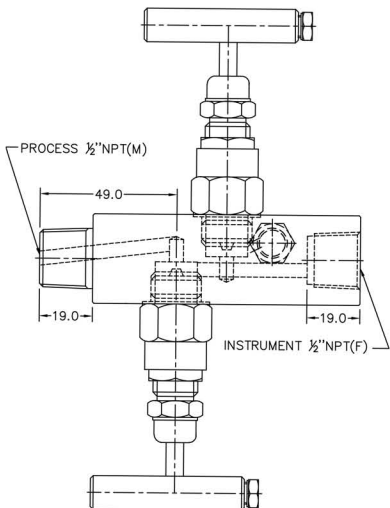
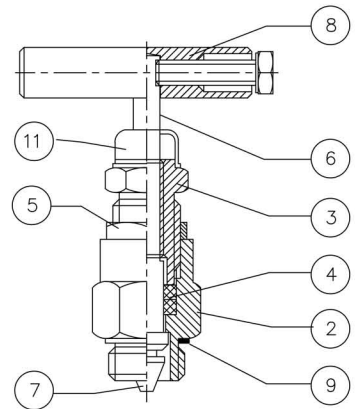
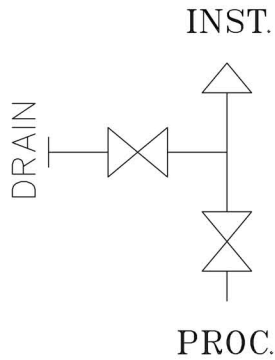
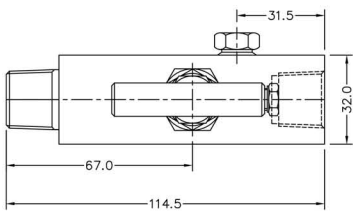
Direct Mount with Drain

Mac-Weld's GV 2 - Valve Manifold directly mounts to in-line gauge or static instruments to provide single block and bleed for isolation and drain/vent capability.

- 316L Stainless Steel Body, stem and trim
- 6000 psig @ 100° F (414 bar @ 38° C)
- PTFE Packing
- Non-rotating trim provides bubble tight shut-off
- Optional availability: NACE certified wetted parts and graphoil packing



| PART NUMBER   |                |               |                          |          |
|---|----------------|---------------|--------------------------|----------|
| <b>M-2GV-L-DM-08M-08F-P</b>   |                |               |                          |          |
| MANIFOLD TYPE AND DESCRIPTION   | END CONNECTION |               | DRAIN / VENT<br>c/w PLUG | MATERIAL |
|   | PROCESS        | INSTRUMENT    |                          |          |
| Stainless Steel 2 Valve Block & Bleed In-Line style, direct mount, T-Bar handle, c/w Drain/Vent | ½" Male NPT    | ½" Female NPT | ¼" Female NPT            | 316L     |



| PART NO. | PART DESCRIPTION      | MATERIAL | QTY |
|----------|-----------------------|----------|-----|
| 1        | BODY                  | SS 316L  | 1   |
| 2        | GLAND BODY            | SS 316L  | 2   |
| 3        | GLAND RETAINER        | SS 304   | 2   |
| 4        | GLAND SEAL            | P.T.F.E  | 4   |
| 5        | CHECK NUT             | SS 304   | 2   |
| 6        | SPINDLE               | SS 316L  | 2   |
| 7        | TRIM                  | SS 316L  | 2   |
| 8        | HANDLE                | SS 304   | 2   |
| 9        | WASHER                | S.S.     | 2   |
| 10       | LOCK PIN              | SS 304   | 2   |
| 11       | DUST CAP              | P.V.C.   | 2   |
| 12       | DRAIN PLUG ¼" NPT (M) | SS 316L  | 1   |